

An aerial photograph of the London skyline, featuring The Shard as the most prominent skyscraper. The city is densely packed with buildings of various architectural styles, including modern glass-fronted structures and older brick buildings. The sky is bright blue with scattered white clouds. A large, stylized graphic element consisting of a grey triangle and a red triangle is overlaid on the right side of the image.

# DONGGUAN FODOR TECHNOLOGY CO.,LTD

## COMPANY PROFILE

**RICH IN QUALITY & LEADING FUTURE**



# CONTENTS

01	COMANY PROFILE	-----	1
02	BRAND PROFILE	-----	2
03	RELATED BUSINESS	-----	3
04	RELATED PRODUCTS	-----	4
05	WORKSHOP SHOW	-----	5
06	SUFACE TREATMENT TYPE	-----	6
07	COOPERATION PARTNER	-----	7





# COMPANY PROFILE

RICH IN QUALITY & LEADING FUTURE

# PART 01



# COMPANY PROFILE

- Dongguan Fodor Technology Co., LTD is committed to the development and sales of electronic heat sinks and hardware electronic accessories, including: aluminum extrusion heat sink, skived heat sink, cold forging heat sink, water cooler, cooling fan modules, aluminum stamping products and zinc aluminum die-casting products. Based on the development concept of "Rich in quality & leading future", Fodor has the industry perfect supply chain resources, to provide customers with timely, efficient and high-quality services, reduce the inconvenience of customers in each procurement link, really make customers save time, effort and worry.
- Fodor now has 2 senior engineers of water cooler heat sink, 2 senior engineers of aluminum extrusion heat sink, 2 senior engineers of stamping, 2 senior engineers of fan module, and 10 other engineers and quality engineers, to control product design optimization and quality requirements. Sidework, Proe, CAD, PDF and other documents can be accepted by Fodor company for project consultation. The surface treatment that Fodor company can complete includes: anodizing, electrophoresis, complex acid salt, electroplating, painting, powder spraying, chromium plating and other processes to meet the needs of our customers.
- Fodor adhering to customer first, achieve the win-win situation, is willing to establish the long-term cooperation relations with the general customers!



# BRAND PROFILE

RICH IN QUALITY & LEADING FUTURE

# PART 02

# BRAND PROFILE

- SINCE 2019
- FODOR VISION:  
To be a high-quality thermal energy solution supporting service provider
- FODOR MISSION:  
Provide reliability guarantee for heat source components on electronic equipment by Human use
- OPERATION PRINCIPLE: Rich in quality & Leading future
- FODOR VALUE:
- FOR EMPLOYEE: Sharing, Mutual assistance, Impartial, Friendly
- FOR ENTERPRISE: Service, Innovation, Crisis, Pragmatic
- FOR SOCIETY: Responsibility, Openness, Cooperation, Win-win
- FUTURE
- Fodor business school----Let FODOR people have been in a state of progressive growth!
- Fodor Philanthropic Foundations---Together with the merchants of the world, take the society and serve the society!





# RELATED BUSINESS

RICH IN QUALITY & LEADING FUTURE

# PART 03



## RELATED BUSINESS

- 01 OEM ALUMINUM EXTRUSION HEAT SINK
- 02 OEM WATER COOLER HEAT SINK
- 03 OEM SKIVED HEAT SINK
- 04 OEM HEAT PIPE THERMAL MODULE
- 05 OEM DIE CASTING PRODUCTS
- 06 PRECISION MACHINING SERVICE
- 07 THERMAL ANALYSIS SIMULATION AND DESIGN
- 08 STAMPING AND METAL SHEET



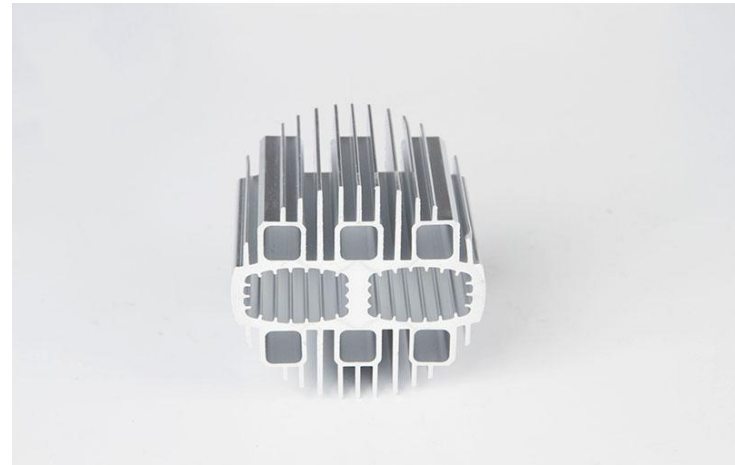
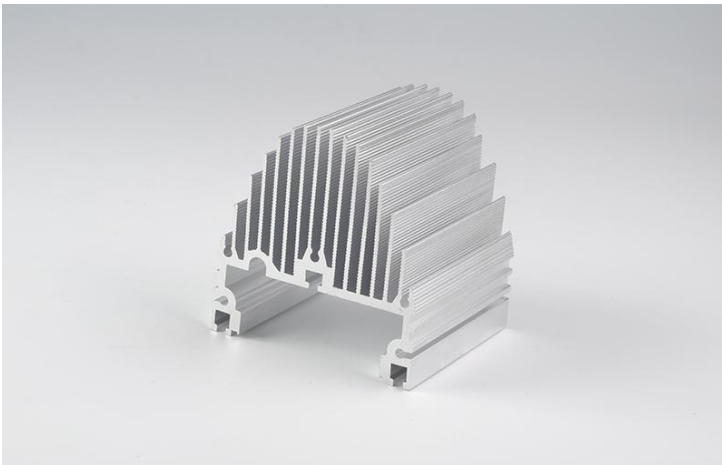


RELATED PRODUCTS  
RICH IN QUALITY & LEADING FUTURE

PART 04

## ALUMINUM EXTRUSION HEAT SINK

- THE MAX WIDTH:600MM
- THE MAX HEIGHT:150MM
- THE MIN FLATNESS:0.02MM
- THE MAX LENGHT:1500MM
- THE MAX LENGTH OF ANODIZING:3000MM
- THE HIGH CHALLENGE ALUMINUM EXTRUSION MOLD



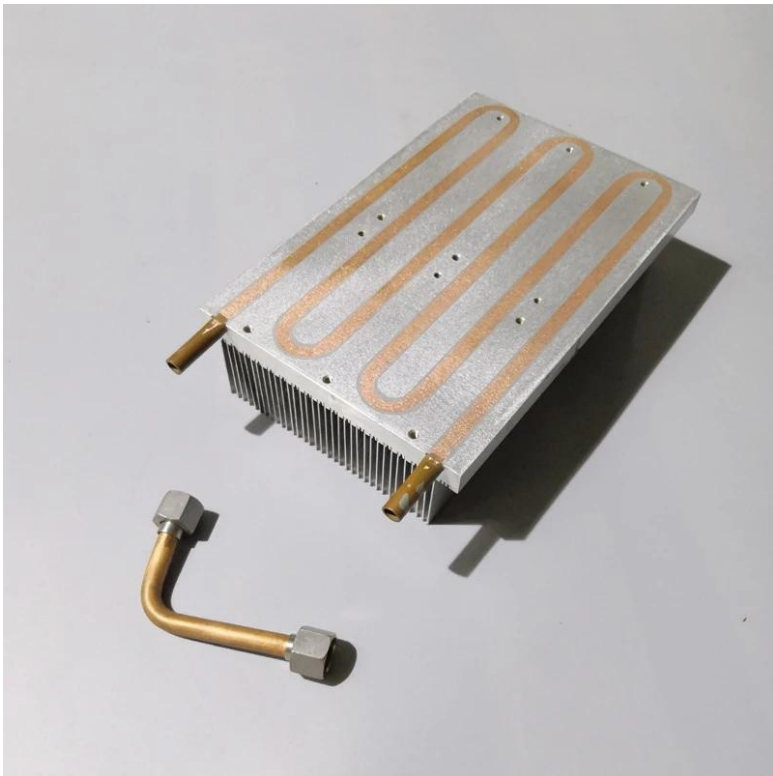
## COLD FORGING HEAT SINK

- THE MAX DIA:320MM
- THE MAX HEIGHT:150MM
- THE MIN FIN THICKNESS:0.3MM
- THE MAX MACHINE:3500TONS



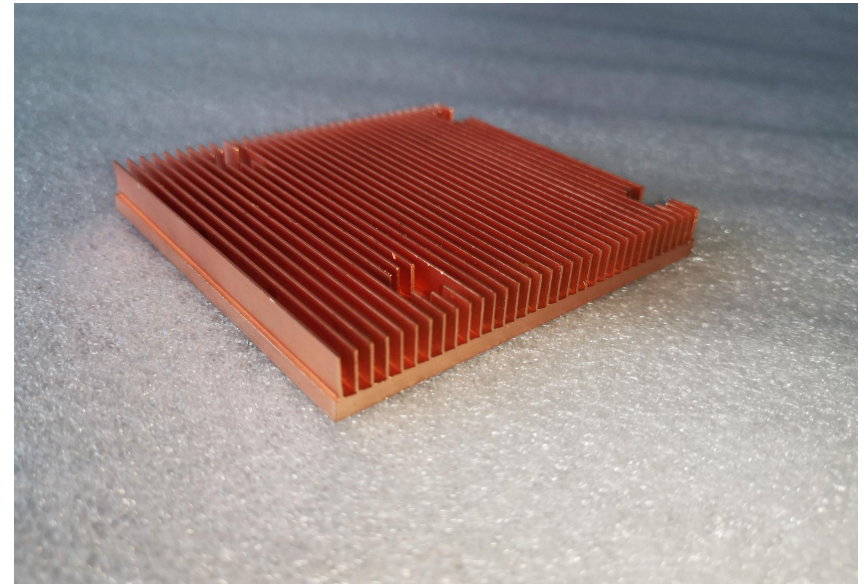
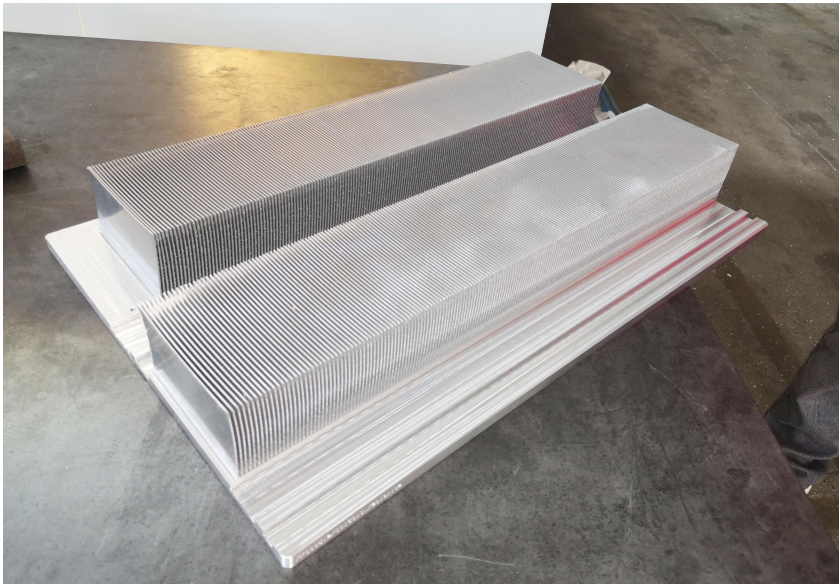
## WATER COOLER HEAT SINK

- Provide a full range of liquid cooling solutions, free of charge to provide you with liquid cooling plate/water cooling plate heat design, structural design, water cooling system assembly design and water connection one-stop supporting services.



## SKIVED HEAT SINK

- THE MAX WIDTH:600MM
- THE MAX HEIGHT:150MM
- PROVIDE COOPER AND ALUMINUM SKIVED HEAT SINK DESIGN AND PRODUCE SERVICE



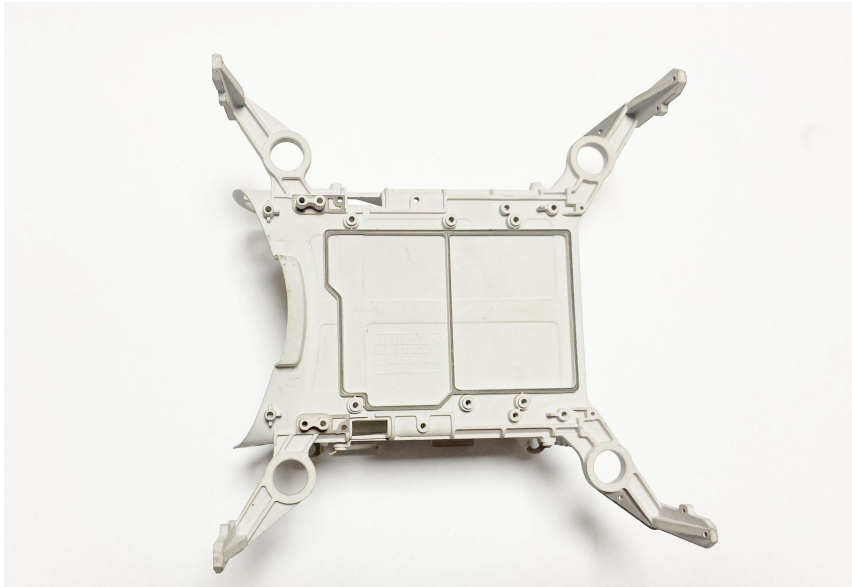
## HEAT PIPE THERMAL MODULE

- PROVIDE HEAT PIPE THERMAL MODULE DESIGN AND PRODUCE SERVICE



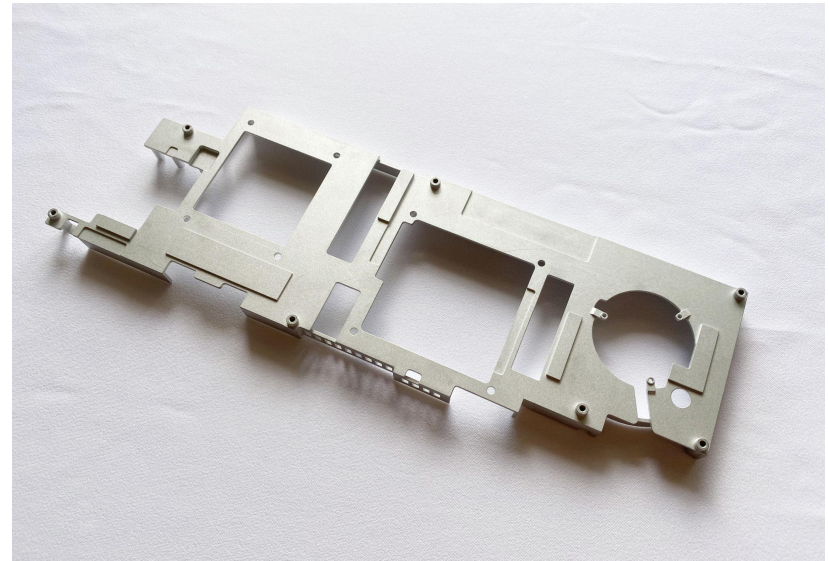
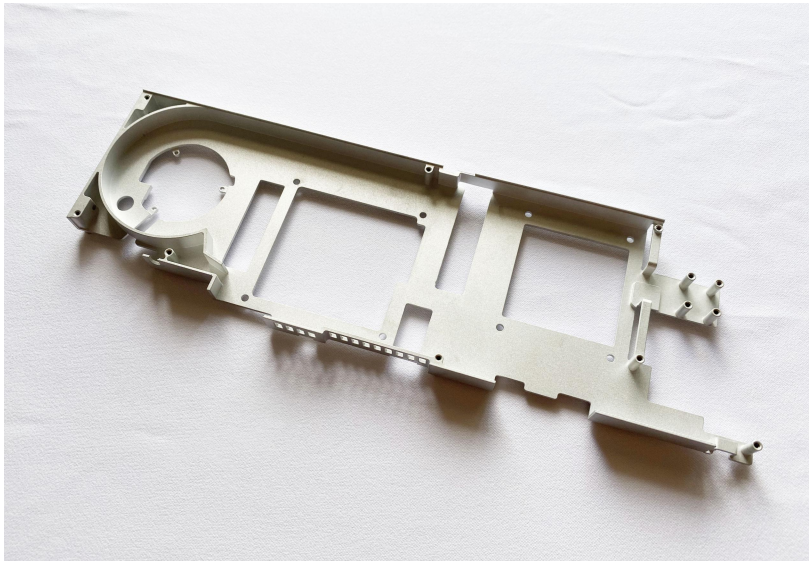
## DIE CASTING PRODUCTS

- THE MAX MACHINE:800T
- PROVIDE ZIN AND ALUMINUM DIE CASTING SERVICE



## PRECISION MACHINING

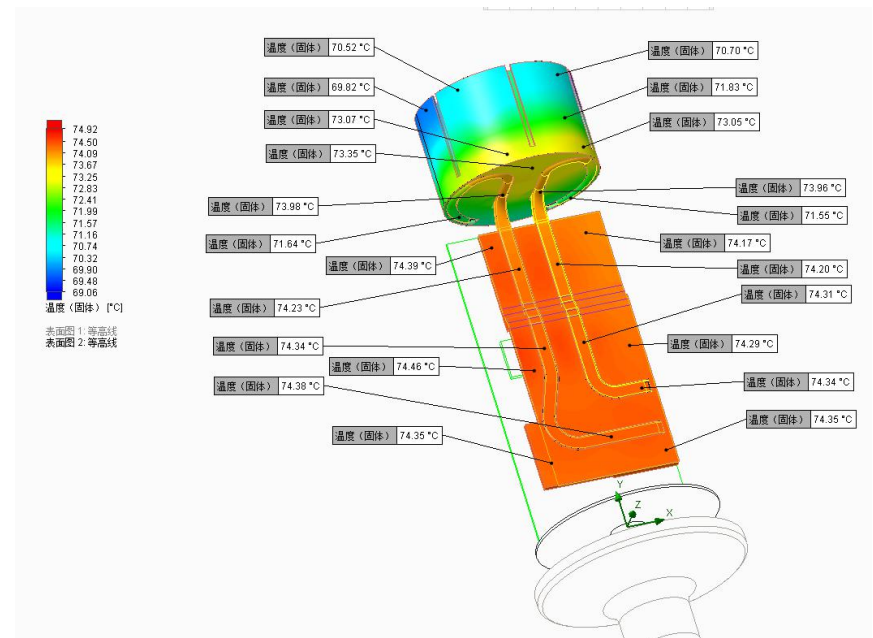
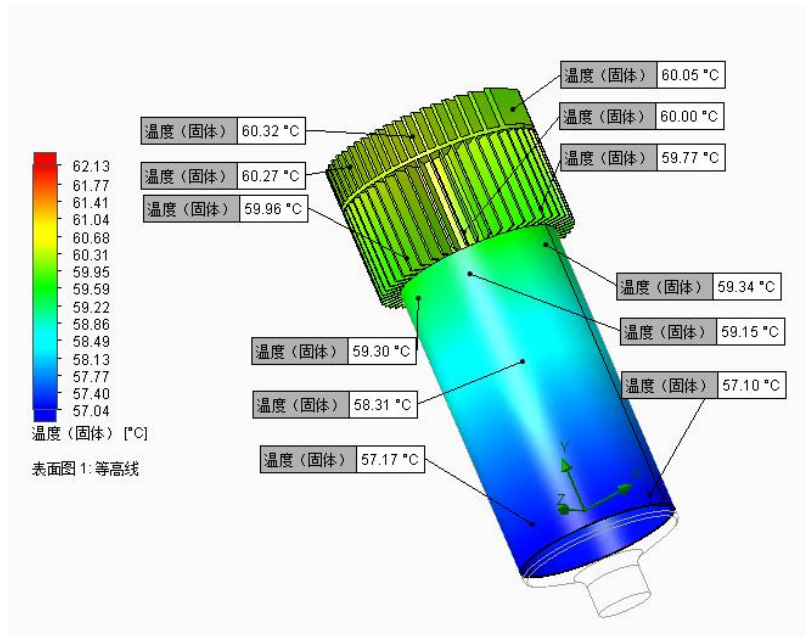
- PROVIDE PRECISION MACHINING HAND PLATE SAPLES
- PROVIDE PRECISION MACHINING MASS PRODUCTION SERVICE





# THERMAL ANALYSIS SIMULATION AND DESIGN

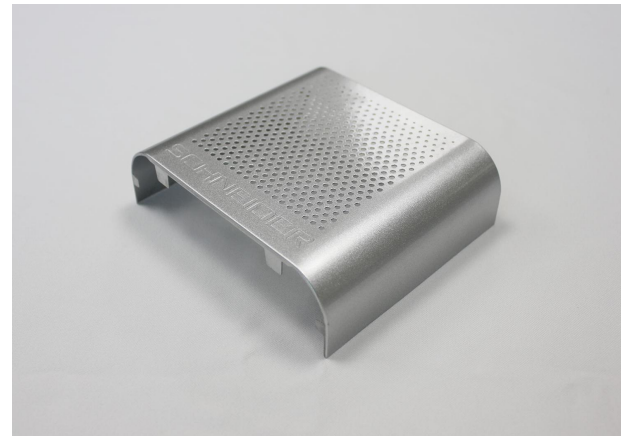
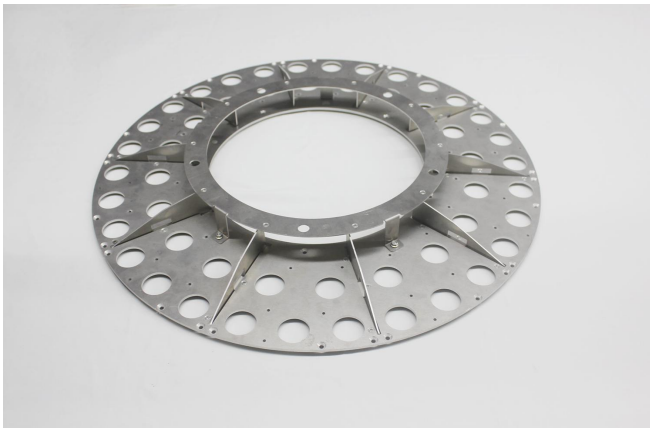
- PROVIDE THERMAL ANALYSIS SIMULATION AND DESIGN
- PROVIDE PRODUCTION SERVICE





## STAMPING AND METAL SHEET

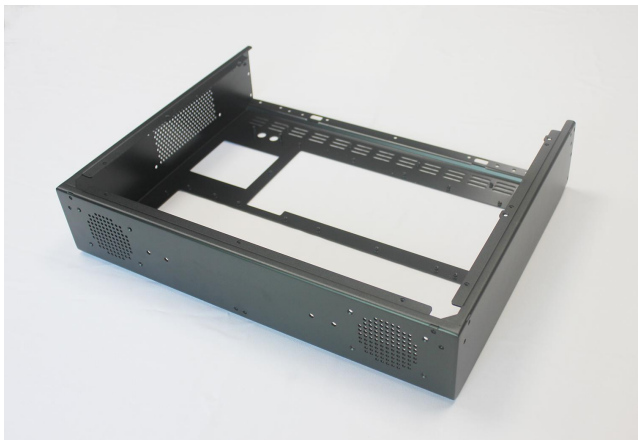
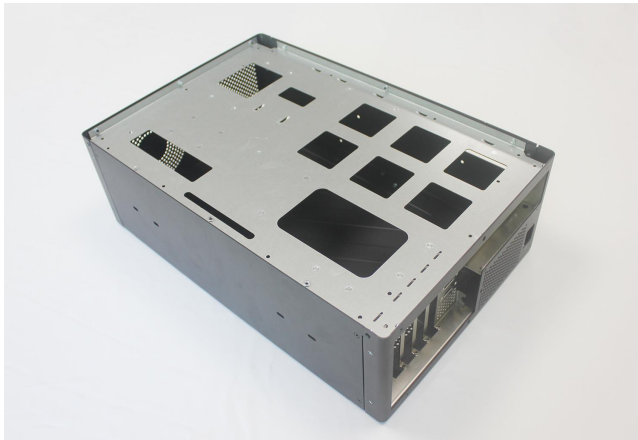
- PROVIDE STAMPING AND METAL SHEET SERVICE





## STAMPING AND METAL SHEET

- PROVIDE STAMPING AND METAL SHEET SERVICE



## STAMPING AND METAL SHEET

- PROVIDE STAMPING AND METAL SHEET SERVICE





# WORKSHOP SHOW

RICH IN QUALITY & LEADING FUTURE

# PART 05

# COMPANY GATE



# CNC WORKSHOP



35 sets 3 axis CNC machines, 4 sets 4 axis CNC machines, 1 set axis CNC machine

# DIE CASTING WORKSHOP



DIE CASTING MACHINE:1 SET 800T/ 1 SET 400T/ 1SET 280T/ 1SET 200T



# STAMPING WORKSHOP



STAMPING MACHINE:300T/ 200T/ 110T/ 80T

# BENDING AND LASER EQUIPMENT



# SHOW ROOM





SURFACE TREATMENT TYPE

RICH IN QUALITY & LEADING FUTURE

PART 06



# SURFACE TREATMENT TYPE

**01**

ANODIZING/HADR ANODIZING

**02**

PAITING/POWER COATING

**03**

E-COATING

**04**

PASAIVATION

**05**

ELECTROPLATING

**06**

SAND BLASTING



COOPERATION PARTNER

RICH IN QUALITY & LEADING FUTURE

PART 07



# COOPERATION PARTNER





# FODOR COMMITMENT:

---

Together with the merchants of the world, take the society and serve the society!







# CONTACT DETAILS



**GAVIN**

TEL : +86 137 2571 3912

WECHAT : 137 2571 3912

SKYPE : FODOR HEAT SINK

E-MAIL : [gavin@fodorheatsink.com](mailto:gavin@fodorheatsink.com)

An aerial view of the London skyline, featuring The Shard as the most prominent skyscraper. To the left, the curved skyscrapers of Canary Wharf are visible. The foreground shows a dense urban area with various buildings and rooftops. The sky is blue with scattered white clouds. A large red and grey geometric shape is overlaid on the right side of the image.

**THANK YOU FOR YOUR WATCHING!**

**FODOR IS WILLING TO HAVE MANY STORIES WITH YOU!**